

TECNOMALL

TECNOMALL TECHNOLOGY CO.,LTD

Add:Room 401,Building 6, No.80. Taibao Road,Humen Town, Dongguan City,
Guangdong Province

TEL:++86-769-82706695

FAX:++86-769-82706685

Mobile: 0086-13723494767

Email: cass@tecnomall.com.cn

Skype: tecnomall-sale3

wechat:Tuyi18102977696

Web: www.tecnomall.com.cn

CATALOG



Computer Case

Power Supply

CPU Cooler

Liquid Cooling

ARGB Fan

TECNOMALL TECHNOLOGY CO.,LTD



CONTENTS

Gaming Case	01
Power Supply	23
Gaming Liquid Cooling	31
Gaming Air Cooling	35
Gaming Fan	39

N707

Panorama ATX case for gaming



Performance ATX case for gaming



N712

MB Support	ATX / MICRO ATX / ITX
Chassis Dimension	L440xW235xH478mm
I/O Panel	USB3.0 x2 + Type C x1 + HD Audio
3.5"+2.5"" Drive Bays	2+1 or 1+2 or 0+3
PCI Slots	7 Slots
Air cooling	Front: 120mm x3 (Max.) or 140mm x3 (Max.) Top: 120mm x3 (Max.) or 140mm x2 (Max.) Rear: 120mm x1 (Max.) MB Cover: 120mm x 3 (Max.) PSU Cover: 120mm x3 (Max.)
Liquid cooling	Top: 360/280/240mm Rear: 120mm MB Cover: 360/240mm
CPU cooler Height	170mm
VGA Card lenght	400mm



2205

MB Support	EATX / ATX / MICRO ATX / ITX
Chassis Dimension	L422xW220xH478mm
I/O Panel	USB3.0 x2 + Type C + HD Audio
3.5"+2.5"" Drive Bays	2+2
PCI Slots	7 Slots
Air cooling	Front: 120mm x3 (Max.) or 140mm x3 (Max.) Top: 120mm x3 (Max.) or 140mm x2 (Max.) Rear: 120mm x1 (Max.)
Liquid cooling	Front: 360/280/240mm Top: 360/280/240mm Rear: 120mm
CPU cooler Height	174mm
VGA Card lenght	383mm



K713

MB Support	EATX / ATX / MICRO ATX / ITX
Chassis Dimension	L420 x W220 x H470mm
I/O Panel	USB3.0 x2 + HD Audio
3.5"+2.5"" Drive Bays	2+2 or 1+3
PCI Slots	7 Slots
Air cooling	Front: 120mm x 3 or 140mm x3 (Max.) Top: 120mm x 3 or 140mm x2 (Max.) Rear: 120mm x1(Max.) MB Cover: 120mm x 2 (Max.) PSU Cover: 120mm x3 (Max.)
Liquid cooling	Front: 360/280/240mm Top: 360/280/240mm MB Cover: 240mm Rear: 120mm
CPU cooler Height	185mm
VGA Card lenght	420mm

Performance ATX case for gaming



21621

MB Support	EATX / ATX / MICRO ATX / ITX
Chassis Dimension	L410xW216xH470mm
I/O Panel	USB3.0 x1 + USB2.0 x2 + HD Audio
3.5"+2.5"" Drive Bays	2+2 or 1+3
PCI Slots	7 Slots
Air cooling	Front: 120mm x3 (Max.) or 140mm x3 (Max.)
	Top: 120mm x3 (Max.) or 140mm x2 (Max.)
	Rear: 120mm x1 (Max.)
Liquid cooling	Front: 360/280/240mm
	Top: 360/280/240mm
	Rear: 120mm
CPU cooler Height	170mm
VGA Card lenght	385mm



P19L

MB Support	EATX / ATX / MICRO ATX / ITX
Chassis Dimension	L430xW230xH436mm
I/O Panel	USB3.0 x2 + HD Audio
3.5"+2.5"" Drive Bays	1+1
PCI Slots	7 Slots
Air cooling	Front: 120mm x3 (Max.) or 140mm x2 (Max.)
	Top: 120mm x3 (Max.) or 140mm x2 (Max.)
	Rear: 120mm x1 or 140mm x1 (Max.)
	PSU Cover: 120mm x2 (Max.)
Liquid cooling	Front: 240mm Top: 360/280/240mm Rear: 120mm
CPU cooler Height	185mm
VGA Card lenght	395mm



P18L

MB Support	EATX / ATX / MICRO ATX / ITX
Chassis Dimension	L430xW230xH436mm
I/O Panel	USB3.0 x2 + HD Audio
3.5"+2.5"" Drive Bays	1+1
PCI Slots	7 Slots
Air cooling	Front: 120mm x3 (Max.) or 140mm x2 (Max.)
	Top: 120mm x3 (Max.) or 140mm x2 (Max.)
	Rear: 120mm x1 or 140mm x1 (Max.)
	PSU Cover: 120mm x2 (Max.)
Liquid cooling	Front: 240mm Top: 360/280/240mm Rear: 120mm
CPU cooler Height	185mm
VGA Card lenght	395mm



K521L

MB Support	ATX / MICRO ATX / ITX
Chassis Dimension	L420xW210xH465mm
I/O Panel	USB3.0 x1 + USB2.0 x1 + HD Audio
3.5"+2.5"" Drive Bays	2+1 or 1+2
PCI Slots	7 Slots
Air cooling	Front: 120mm x3 (Max.) or 140mm x2 (Max.)
	Top: 120mm x3 (Max.) or 140mm x2 (Max.)
	Rear: 120mm x1 (Max.)
Liquid cooling	MB Cover: 120mm x 2 (Max.) PSU Cover: 120mm x2 (Max.)
	Front: 360/280/240mm Top: 360/280/240mm
	Rear: 120mm
CPU cooler Height	165mm
VGA Card lenght	390mm



K519L

MB Support	ATX / MICRO ATX / ITX
Chassis Dimension	L420xW210xH465mm
I/O Panel	USB3.0 x1 + USB2.0 x1 + HD Audio
3.5"+2.5"" Drive Bays	2+1 or 1+2
PCI Slots	7 Slots
Air cooling	Front: 120mm x3 (Max.) or 140mm x2 (Max.)
	Top: 120mm x3 (Max.) or 140mm x2 (Max.)
	Rear: 120mm x1 (Max.)
	MB Cover: 120mm x 2 (Max.) PSU Cover: 120mm x2 (Max.)
Liquid cooling	Front: 360/280/240mm Top: 360/280/240mm
	Rear: 120mm
CPU cooler Height	165mm
VGA Card lenght	390mm



K520

MB Support	ATX / MICRO ATX / ITX
Chassis Dimension	L360 x W210 x H470mm
I/O Panel	USB3.0 x2 + HD Audio
3.5"+2.5"" Drive Bays	2+3 or 1+4
PCI Slots	7 Slots
Air cooling	Front: 120mm x 3 or 140mm x2 (Max.)
	Top: 120mm x 2 or 140mm x2 (Max.)
	Rear: 120mm x1(Max.)
	PSU Cover: 120mm x2 (Max.)
Liquid cooling	Front: 360/280/240mm Top: 280/240mm
	Rear: 120mm
CPU cooler Height	165mm
VGA Card lenght	340mm

Performance ATX case for gaming



K521

MB Support	ATX / MICRO ATX / ITX
Chassis Dimension	L360 x W210 x H470mm
I/O Panel	USB3.0 x1 + USB2.0 x2 + HD Audio
3.5"+2.5"" Drive Bays	2+3 or 1+4
PCI Slots	7 Slots
Air cooling	Front: 120mm x 3 or 140mm x2 (Max.)
	Top: 120mm x 2 or 140mm x2 (Max.)
	Rear: 120mm x1(Max.)
	PSU Cover: 120mm x2 (Max.)
Liquid cooling	Front: 360/280/240mm Top: 280/240mm
	Rear: 120mm
CPU cooler Height	165mm
VGA Card lenght	340mm



4201

MB Support	ATX / MICRO ATX / ITX
Chassis Dimension	L420xW215xH455mm
I/O Panel	USB3.0 x1 + USB1.0 x1 + HD Audio
3.5"+2.5"" Drive Bays	1+1
PCI Slots	7 Slots
Air cooling	Front: 120mm x3 (Max.) or 140mm x2 (Max.)
	Top: 120mm x3 (Max.) or 140mm x2 (Max.)
	Rear: 120mm x1 (Max.)
	MB Cover: 120mm x 2 (Max.) PSU Cover: 120mm x2 (Max.)
Liquid cooling	Front: 360/280/240mm Top: 360/280/240mm
	Rear: 120mm
CPU cooler Height	170mm
VGA Card lenght	390mm



K522

MB Support	ATX / MICRO ATX / ITX
Chassis Dimension	L360 x W210 x H470mm
I/O Panel	USB3.0 x2 + HD Audio
3.5"+2.5"" Drive Bays	2+3 or 1+4
PCI Slots	7 Slots
Air cooling	Front: 120mm x 3 or 140mm x2 (Max.)
	Top: 120mm x 2 or 140mm x2 (Max.)
	Rear: 120mm x1(Max.)
	PSU Cover: 120mm x2 (Max.)
Liquid cooling	Front: 360/280/240mm Top: 280/240mm
	Rear: 120mm
CPU cooler Height	165mm
VGA Card lenght	340mm



B02X

MB Support	EATX / ATX / MICRO ATX / ITX
Chassis Dimension	L435xW225xH465mm
I/O Panel	USB3.0 x1 + USB1.0 x1 + HD Audio
3.5"+2.5"" Drive Bays	2+2 or 1+3 or 4+0
PCI Slots	7 Slots
Air cooling	Front: 140mm x2 (Max.)
	Top: 120mm x3 (Max.) or 140mm x2 (Max.)
	Rear: 140mm x1 (Max.)
	PSU Cover: 120mm x2 (Max.)
Liquid cooling	Top: 360/280/240mm
	Rear: 120mm
CPU cooler Height	175mm
VGA Card lenght	430mm



SA01

MB Support	ATX / MICRO ATX / ITX
Chassis Dimension	L445xW220xH445mm
I/O Panel	USB3.0 x1 + USB2.0 x1 + HD Audio
3.5"+2.5"" Drive Bays	1+1 or 2+0
PCI Slots	7 Slots
Air cooling	Front: 120mm x3 (Max.) or 140mm x2 (Max.)
	Top: 120mm x3 (Max.) or 140mm x2 (Max.)
	Rear: 120mm x1 (Max.) MB Cover: 120mm x2 (Max.)
	PSU Cover: 120mm x3 (Max.)
Liquid cooling	Top: 360/280/240mm Rear: 120mm
CPU cooler Height	180mm
VGA Card lenght	410mm



B03X

MB Support	EATX / ATX / MICRO ATX / ITX
Chassis Dimension	L435xW225xH465mm
I/O Panel	USB3.0 x1 + USB1.0 x1 + HD Audio
3.5"+2.5"" Drive Bays	2+2 or 1+3 or 4+0
PCI Slots	7 Slots
Air cooling	Front: 140mm x2 (Max.)
	Top: 120mm x3 (Max.) or 140mm x2 (Max.)
	Rear: 140mm x1 (Max.)
	PSU Cover: 120mm x2 (Max.)
Liquid cooling	Top: 360/280/240mm
	Rear: 120mm
CPU cooler Height	175mm
VGA Card lenght	430mm

Performance ATX case for gaming



X1

MB Support	ATX / MICRO ATX / ITX
Chassis Dimension	L335xW216xH445mm
I/O Panel	USB3.0 x1 + USB2.0 x2 + HD Audio
3.5"+2.5"" Drive Bays	2+2
PCI Slots	7 Slots
Air cooling	Front: 120mm x3 (Max.) or 140mm x2 (Max.)
	Top: 120mm x2 (Max.) or 140mm x2 (Max.)
	Rear: 120mm x1 (Max.)
Liquid cooling	Front: 360/280/240mm Top: 240mm
	Rear: 120mm
CPU cooler Height	175mm
VGA Card lenght	310mm



X8

MB Support	ATX / MICRO ATX / ITX
Chassis Dimension	L335xW216xH445mm
I/O Panel	USB3.0 x1 + USB2.0 x2 + HD Audio
3.5"+2.5"" Drive Bays	2+2
PCI Slots	7 Slots
Air cooling	Front: 120mm x3 (Max.) or 140mm x2 (Max.)
	Top: 120mm x2 (Max.) or 140mm x2 (Max.)
	Rear: 120mm x1 (Max.)
Liquid cooling	Front: 360/280/240mm Top: 240mm
	Rear: 120mm
CPU cooler Height	175mm
VGA Card lenght	310mm



X2

MB Support	ATX / MICRO ATX / ITX
Chassis Dimension	L335xW216xH445mm
I/O Panel	USB3.0 x1 + USB2.0 x2 + HD Audio
3.5"+2.5"" Drive Bays	2+2
PCI Slots	7 Slots
Air cooling	Front: 120mm x3 (Max.) or 140mm x2 (Max.)
	Top: 120mm x2 (Max.) or 140mm x2 (Max.)
	Rear: 120mm x1 (Max.)
Liquid cooling	Front: 360/280/240mm Top: 240mm
	Rear: 120mm
CPU cooler Height	175mm
VGA Card lenght	310mm



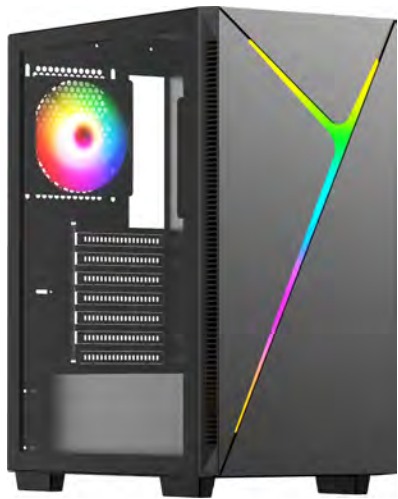
X10

MB Support	ATX / MICRO ATX / ITX
Chassis Dimension	L335xW216xH445mm
I/O Panel	USB3.0 x1 + USB2.0 x2 + HD Audio
3.5"+2.5"" Drive Bays	2+2
PCI Slots	7 Slots
Air cooling	Front: 120mm x3 (Max.) or 140mm x2 (Max.)
	Top: 120mm x2 (Max.) or 140mm x2 (Max.)
	Rear: 120mm x1 (Max.)
Liquid cooling	Front: 360/280/240mm Top: 240mm
	Rear: 120mm
CPU cooler Height	175mm
VGA Card lenght	310mm



X3

MB Support	ATX / MICRO ATX / ITX
Chassis Dimension	L335xW216xH445mm
I/O Panel	USB3.0 x1 + USB2.0 x2 + HD Audio
3.5"+2.5"" Drive Bays	2+2
PCI Slots	7 Slots
Air cooling	Front: 120mm x3 (Max.) or 140mm x2 (Max.)
	Top: 120mm x2 (Max.) or 140mm x2 (Max.)
	Rear: 120mm x1 (Max.)
Liquid cooling	Front: 360/280/240mm Top: 240mm
	Rear: 120mm
CPU cooler Height	175mm
VGA Card lenght	310mm



X11

MB Support	ATX / MICRO ATX / ITX
Chassis Dimension	L335xW216xH445mm
I/O Panel	USB3.0 x1 + USB2.0 x2 + HD Audio
3.5"+2.5"" Drive Bays	2+2
PCI Slots	7 Slots
Air cooling	Front: 120mm x3 (Max.) or 140mm x2 (Max.)
	Top: 120mm x2 (Max.) or 140mm x2 (Max.)
	Rear: 120mm x1 (Max.)
Liquid cooling	Front: 360/280/240mm Top: 240mm
	Rear: 120mm
CPU cooler Height	175mm
VGA Card lenght	310mm

Performance ATX case for gaming



OA07

MB Support	ATX / MICRO ATX / ITX
Chassis Dimension	L330xW218xH445mm
I/O Panel	USB3.0 x1 + USB1.0 x1 + HD Audio
3.5"+2.5"" Drive Bays	1+1 or 2+0
PCI Slots	7 Slots
Air cooling	Front: 120mm x3 (Max.)
	Top: 120mm x2 (Max.) or 140mm x2 (Max.)
	Rear: 120mm x1 (Max.)
	PSU Cover: 120mm x2 (Max.)
Liquid cooling	Top: 240mm Rear: 120mm
CPU cooler Height	180mm
VGA Card lenght	285mm



OA08

MB Support	ATX / MICRO ATX / ITX
Chassis Dimension	L330xW218xH445mm
I/O Panel	USB3.0 x1 + USB1.0 x1 + HD Audio
3.5"+2.5"" Drive Bays	1+1 or 2+0
PCI Slots	7 Slots
Air cooling	Front: 120mm x3 (Max.)
	Top: 120mm x2 (Max.) or 140mm x2 (Max.)
	Rear: 120mm x1 (Max.)
	PSU Cover: 120mm x2 (Max.)
Liquid cooling	Top: 240mm Rear: 120mm
CPU cooler Height	180mm
VGA Card lenght	285mm



195AS01

MB Support	ATX / MICRO ATX / ITX
Chassis Dimension	L305xW195xH435mm
I/O Panel	USB3.0 x1 + USB1.0 x2 + HD Audio
3.5"+2.5"" Drive Bays	2+1 or 1+2
PCI Slots	7 Slots
Air cooling	Front: 120mm x3 (Max.)
	Top: 120mm x2 (Max.)
	Rear: 120mm x1 (Max.) PSU Cover: 120mm x2 (Max.)
Liquid cooling	Front: 240mm
CPU cooler Height	160mm
VGA Card lenght	300mm

Panorama ATX case for gaming



K907

MB Support	EATX / ATX / MICRO ATX / ITX
Chassis Dimension	L460 x W240 x H480mm
I/O Panel	USB3.0 x2 + Type C x1 + HD Audio
3.5"+2.5"" Drive Bays	2+2 or 0+4
PCI Slots	7 Slots
Air cooling	Top: 120mm x 3 or 140mm x2 (Max.)
	Rear: 120mm x1 or 140mm x1(Max.)
	MB Cover: 120mm x 3 (Max.) PSU Cover: 120mm x3 (Max.)
Liquid cooling	Top: 360/280mm Rear: 120mm
	MB Cover: 360/240mm
CPU cooler Height	185mm
VGA Card lenght	465mm



N707

MB Support	ATX / MICRO ATX / ITX
Chassis Dimension	L440xW235xH478mm
I/O Panel	USB3.0 x2 + Type C x1 + HD Audio
3.5"+2.5"" Drive Bays	2+1 or 1+2 or 0+3
PCI Slots	7 Slots
Air cooling	Top: 120mm x3 (Max.) or 140mm x2 (Max.)
	Rear: 120mm x1 (Max.)
	MB Cover: 120mm x 3 (Max.) PSU Cover: 120mm x3 (Max.)
Liquid cooling	Top: 360/280/240mm Rear: 120mm
	MB Cover: 360/240mm
CPU cooler Height	170mm
VGA Card lenght	435mm



23502

MB Support	ATX / MICRO ATX / ITX
Chassis Dimension	L445 x W235 x H460mm
I/O Panel	USB3.0 x1 + Type C + HD Audio
3.5"+2.5"" Drive Bays	1+3 or 2+2
PCI Slots	7 Slots
Air cooling	Top: 120mm x 3 or 140mm x2 (Max.)
	Rear: 120mm x1or 140mm x1 (Max.)
	MB Cover: 120mm x 2 or 140mm x2 (Max.)
	PSU Cover: 120mm x3 (Max.)
Liquid cooling	Top: 360/280/240mm
	MB Cover: 240mm Rear: 120mm
CPU cooler Height	190mm
VGA Card lenght	420mm

Panorama ATX case for gaming



K609

MB Support	ATX / MICRO ATX / ITX
Chassis Dimension	L420xW216xH465mm
I/O Panel	USB3.0 x1 + USB2.0 x1 + HD Audio
3.5"+2.5"" Drive Bays	1+1
PCI Slots	7 Slots
Air cooling	Top: 120mm x 3 or 140mm x2 (Max.) Rear: 120mm x1 (Max.) MB Cover: 120mm x 3 (Max.) PSU Cover: 120mm x2 (Max.)
Liquid cooling	Top: 360/280mm Rear: 120mm
CPU cooler Height	165mm
VGA Card lenght	390mm



4202

MB Support	ATX / MICRO ATX / ITX
Chassis Dimension	L420 x W215 x H455mm
I/O Panel	USB3.0 x1 + USB1.0 x1 + HD Audio
3.5"+2.5"" Drive Bays	1+1
PCI Slots	7 Slots
Air cooling	Top: 120mm x 3 or 140mm x2 (Max.) Rear: 120mm x1(Max.) MB Cover: 120mm x 3 (Max.) PSU Cover: 120mm x3 (Max.)
Liquid cooling	Top: 360/280mm Rear: 120mm
CPU cooler Height	165mm
VGA Card lenght	390mm



H6 Screen

MB Support	E-ATX / ATX / MICRO ATX / ITX
Chassis Dimension	L410xW210xH465mm
I/O Panel	USB3.0 x2 + HD Audio
3.5"+2.5"" Drive Bays	2+2 or 1+3
PCI Slots	7 Slots
Air cooling	Top: 120mm x3 (Max.) or 140mm x2 (Max.) Rear: 120mm x1 (Max.) MB Cover: 120mm x 2 (Max.) PSU Cover: 120mm x3 (Max.)
Liquid cooling	Top: 360/280/240mm MB Cover: 240mm Rear: 120mm
CPU cooler Height	160mm
VGA Card lenght	405mm



B01X

MB Support	EATX / ATX / MICRO ATX / ITX
Chassis Dimension	L435xW225xH465mm
I/O Panel	USB3.0 x1 + USB2.0 x1 + HD Audio
3.5"+2.5"" Drive Bays	2+2 or 1+3 or 4+0
PCI Slots	7 Slots
Air cooling	Top: 120mm x3 (Max.) or 140mm x2 (Max.) Rear: 140mm x1 (Max.) MB Cover:120mm x2 (Max.) PSU Cover: 120mm x2 (Max.)
Liquid cooling	Top: 360/280/240mm Rear: 120mm
CPU cooler Height	175mm
VGA Card lenght	430mm



H6

MB Support	E-ATX / ATX / MICRO ATX / ITX
Chassis Dimension	L410xW210xH465mm
I/O Panel	USB3.0 x2 + HD Audio
3.5"+2.5"" Drive Bays	2+2 or 1+3
PCI Slots	7 Slots
Air cooling	Top: 120mm x3 (Max.) or 140mm x2 (Max.) Rear: 120mm x1 (Max.) MB Cover: 120mm x 2 (Max.) PSU Cover: 120mm x3 (Max.)
Liquid cooling	Top: 360/280/240mm MB Cover: 240mm Rear: 120mm
CPU cooler Height	160mm
VGA Card lenght	405mm



OA01

MB Support	ATX / MICRO ATX / ITX
Chassis Dimension	L330xW218xH445mm
I/O Panel	USB3.0 x1 + USB1.0 x1 + HD Audio
3.5"+2.5"" Drive Bays	1+1 or 2+0
PCI Slots	7 Slots
Air cooling	Top: 120mm x2 (Max.) or 140mm x2 (Max.) Rear: 120mm x1 (Max.) PSU Cover: 120mm x2 (Max.)
Liquid cooling	Top: 240mm Rear: 120mm
CPU cooler Height	180mm
VGA Card lenght	310mm

Panorama ATX case for gaming



285E2

MB Support	ATX / MICRO ATX / ITX
Chassis Dimension	L425xW285xH430mm
I/O Panel	USB3.0 x2 + Type C x1 + HD Audio
3.5"+2.5" Drive Bays	1+1
PCI Slots	9 Slots
Air cooling	Top: 120mm x3 (Max.) Rear: 120mm x1 (Max.) MB Cover: 120mm x 3 or 140mm x2 (Max.) Bottom: 120mm x3 (Max.)
Liquid cooling	Top: 360/240mm Rear: 120mm MB Cover: 360/280/240mm Bottom: 360/240mm
CPU cooler Height	160mm
VGA Card lenght	405mm



285B2 RGB

MB Support	ATX / MICRO ATX / ITX
Chassis Dimension	L420xW285xH380mm
I/O Panel	USB3.0 x1 + USB2.0 x1 + Type C x1 + HD Audio
3.5"+2.5" Drive Bays	1+2
PCI Slots	7 Slots
Air cooling	Rear: 120mm x1 (Max.) MB Cover: 120mm x 3 or 140mm x2 (Max.) Bottom: 120mm x3 (Max.)
Liquid cooling	Rear: 120mm MB Cover: 280/240mm Bottom: 360/240mm
CPU cooler Height	160mm
VGA Card lenght	405mm



285E1 RGB

MB Support	ATX / MICRO ATX / ITX
Chassis Dimension	L430 x W285 x H420mm
I/O Panel	USB3.0 x2 + Type C x1 + HD Audio
3.5"+2.5" Drive Bays	1+2
PCI Slots	9 Slots
Air cooling	Top: 120mm x3 or 140mm x2 (Max.) Rear: 120mm x1 (Max.) MB Cover: 120mm x 3 or 140mm x2 (Max.) Bottom: 120mm x3 (Max.)
Liquid cooling	Top:360/240mm MB Cover: 360/280mm Rear: 120mm Bottom: 360/280mm
CPU cooler Height	160mm
VGA Card lenght	405mm



285B RGB

MB Support	ATX / MICRO ATX / ITX
Chassis Dimension	L420xW285xH380mm
I/O Panel	USB3.0 x1 + USB2.0 x2 + HD Audio
3.5"+2.5" Drive Bays	1+2
PCI Slots	7 Slots
Air cooling	Top: 120mm x3 (Max.) 140mm x2 (Max.) Rear: 120mm x1 (Max.) MB Cover: 120mm x 3 or 140mm x2 (Max.) Bottom: 120mm x3 (Max.)
Liquid cooling	Top:360/280mm Rear: 120mm MB Cover: 280/240mm Bottom: 360/240mm
CPU cooler Height	160mm
VGA Card lenght	405mm



285E RGB

MB Support	ATX / MICRO ATX / ITX
Chassis Dimension	L425 x W285 x H435mm
I/O Panel	USB3.0 x2 + Type C x1 + HD Audio
3.5"+2.5" Drive Bays	1+2
PCI Slots	9 Slots
Air cooling	Rear: 120mm x1 (Max.) MB Cover: 120mm x 3 or 140mm x2 (Max.) Bottom: 120mm x3 (Max.)
Liquid cooling	Rear: 120mm MB Cover: 360/280mm Bottom: 360/280mm
CPU cooler Height	160mm
VGA Card lenght	405mm



285E EVO

MB Support	ATX / MICRO ATX / ITX
Chassis Dimension	L425 x W285 x H395mm
I/O Panel	USB3.0 x1 + USB2.0 x1 + HD Audio
3.5"+2.5" Drive Bays	1+2
PCI Slots	7 Slots
Air cooling	Top: 120mm x3 (Max.) Rear: 120mm x1 (Max.) MB Cover: 120mm x 3 (Max.) Bottom: 120mm x3 (Max.)
Liquid cooling	Top: 360/240mm Rear: 120mm MB Cover: 240mm Bottom: 360/240mm
CPU cooler Height	160mm
VGA Card lenght	420mm

Performance M-ATX case for gaming



N605

MB Support	MICRO ATX / ITX		
Chassis Dimension	L440xW235xH405mm		
I/O Panel	USB3.0 x2 + HD Audio		
3.5"+2.5" Drive Bays	2+1 or 1+2		
PCI Slots	5 Slots		
Air cooling	Front: 120mm x3 (Max.) or 140mm x2 (Max.)		
	Top: 120mm x3 (Max.) or 140mm x2 (Max.)		
	Rear: 120mm x1 (Max.) or 140mm x1 (Max.)		
	MB Cover: 120mm x 2 (Max.)		
Liquid cooling	PSU Cover: 120mm x3 (Max.) or 140mm x2 (Max.)		
	Front: 240mm	Top: 360/280/240mm	Rear: 120mm
CPU cooler Height	180mm		
VGA Card lenght	390mm		



SM01

MB Support	MICRO ATX / ITX		
Chassis Dimension	L445xW220xH3905mm		
I/O Panel	USB3.0 x1 + USB1.0 x1 + HD Audio		
3.5"+2.5"" Drive Bays	1+1 or 2+0		
PCI Slots	4 Slots		
Air cooling	Front: 120mm x3 [Max.] or 140mm x2 [Max.]		
	Top: 120mm x3 [Max.]		
	Rear: 120mm x1 [Max.]		
	MB Cover: 120mm x 2 [Max.]		
	PSU Cover: 120mm x3 [Max.]		
Liquid cooling	Top: 360/280/240mm		Rear: 120mm
CPU cooler Height	180mm		
VGA Card lenght	380mm		



M508L

MB Support	MICRO ATX / ITX		
Chassis Dimension	L420xW210xH405mm		
I/O Panel	USB3.0 x1 + USB2.0 x1 + HD Audio		
3.5"+2.5" Drive Bays	2+3 or 1+4		
PCI Slots	4 Slots		
Air cooling	Front: 120mm x3 (Max.) or 140mm x2 (Max.)		
	Top: 120mm x3 (Max.) or 140mm x2 (Max.)		
	Rear: 120mm x1 (Max.)		
	MB Cover: 120mm x 2 (Max.)		
Liquid cooling	PSU Cover: 120mm x2 (Max.)		
	Front: 280/240mm	Top: 360/280/240mm	Rear: 120mm
CPU cooler Height	165mm		
VGA Card lenght	390mm		



H1

MB Support	MICRO ATX / ITX		
Chassis Dimension	L360xW208xH405mm		
I/O Panel	USB3.0 x1 + USB2.0 x2 + HD Audio		
3.5"+2.5" Drive Bays	2+3		
PCI Slots	4 Slots		
Air cooling	Front: 120mm x3 (Max.) or 140mm x2 (Max.)		
	Top: 120mm x2 (Max.) or 140mm x2 (Max.)		
	Rear: 120mm x1 (Max.)		
Liquid cooling	Front: 240mm		
	Top: 280/240mm		
	Rear: 120mm		
CPU cooler Height	165mm		
VGA Card lenght	343mm		



M509L

MB Support	MICRO ATX / ITX		
Chassis Dimension	L420xW210xH405mm		
I/O Panel	USB3.0 x1 + USB2.0 x1 + HD Audio		
3.5"+2.5" Drive Bays	2+3 or 1+4		
PCI Slots	4 Slots		
Air cooling	Front: 120mm x3 (Max.) or 140mm x2 (Max.)		
	Top: 120mm x3 (Max.) or 140mm x2 (Max.)		
	Rear: 120mm x1 (Max.)		
	MB Cover: 120mm x 2 (Max.)		
Liquid cooling	PSU Cover: 120mm x2 (Max.)		
	Front: 280/240mm	Top: 360/280/240mm	Rear: 120mm
CPU cooler Height	165mm		
VGA Card lenght	390mm		



M508

MB Support	MICRO ATX / ITX		
Chassis Dimension	L360 x W210 x H405mm		
I/O Panel	USB3.0 x1 + USB2.0 x2 + HD Audio		
3.5"+2.5" Drive Bays	1+2 or 2+1		
PCI Slots	4 Slots		
Air cooling	Front: 120mm x3 (Max.) or 140mm x2 (Max.)		
	Top: 120mm x2 (Max.) or 140mm x2 (Max.)		
	Rear: 120mm x1 (Max.)		
	PSU Cover: 120mm x2 (Max.)		
Liquid cooling	Front:280/240mm	Top: 240mm	Rear: 120mm
CPU cooler Height	185mm		
VGA Card lenght	345mm		

Performance M-ATX case for gaming



M509

MB Support	MICRO ATX / ITX		
Chassis Dimension	L360 x W210 x H405mm		
I/O Panel	USB3.0 x1 + USB2.0 x2 + HD Audio		
3.5"+2.5" Drive Bays	1+2 or 2+1		
PCI Slots	4 Slots		
Air cooling	Front: 120mm x3 (Max.) or 140mm x2 (Max.)		
	Top: 120mm x2 (Max.) or 140mm x2 (Max.)		
	Rear: 120mm x1 (Max.)		
	PSU Cover: 120mm x2 (Max.)		
Liquid cooling	Front:280/240mm	Top: 240mm	Rear: 120mm
CPU cooler Height	185mm		
VGA Card lenght	345mm		



OM02

MB Support	MICRO ATX / ITX	
Chassis Dimension	L330xW230xH380mm	
I/O Panel	USB3.0 x1 + USB2.0 x1 + HD Audio	
3.5"+2.5"" Drive Bays	1+1 or 2+0	
PCI Slots	4 Slots	
Air cooling	Front: 120mm x2 [Max.]	
	Top: 120mm x2 [Max.] or 140mm x2 [Max.]	
	Rear: 120mm x1 [Max.]	
	PSU Cover: 120mm x2 [Max.]	
Liquid cooling	Top: 240mm	Rear: 120mm
CPU cooler Height	180mm	
VGA Card lenght	285mm	



Y01

MB Support	MICRO ATX / ITX		
Chassis Dimension	L360xW198xH390mm		
I/O Panel	USB3.0 x1 + USB1.0 x2 + HD Audio		
3.5"+2.5" Drive Bays	2+2		
PCI Slots	4 Slots		
Air cooling	Front: 120mm x3 (Max.)		
	Top: 120mm x2 (Max.)		
	Rear: 120mm x1 (Max.)		
	PSU Cover: 120mm x2 (Max.)		
Liquid cooling	Rear: 120mm		
CPU cooler Height	160mm		
VGA Card lenght	330mm		



OM06

MB Support	MICRO ATX / ITX
Chassis Dimension	L330xW230xH380mm
I/O Panel	USB3.0 x1 + USB2.0 x1 + HD Audio
3.5"+2.5"" Drive Bays	1+1 or 2+0
PCI Slots	4 Slots
Air cooling	Front: 120mm x2 (Max.)
	Top: 120mm x2 (Max.) or 140mm x2 (Max.)
	Rear: 120mm x1 (Max.)
	PSU Cover: 120mm x2 (Max.)
Liquid cooling	Top: 240mm Rear: 120mm
CPU cooler Height	180mm
VGA Card lenght	285mm



Y02

MB Support	MICRO ATX / ITX		
Chassis Dimension	L360xW198xH390mm		
I/O Panel	USB3.0 x1 + USB1.0 x2 + HD Audio		
3.5"+2.5" Drive Bays	2+2		
PCI Slots	4 Slots		
Air cooling	Front: 120mm x3 (Max.)		
	Top: 120mm x2 (Max.)		
	Rear: 120mm x1 (Max.)		
	PSU Cover: 120mm x2 (Max.)		
Liquid cooling	Rear: 120mm		
CPU cooler Height	160mm		
VGA Card lenght	330mm		



M1

MB Support	MICRO ATX / ITX		
Chassis Dimension	L350 x W168 x H290mm		
I/O Panel	USB3.0 x1 + HD Audio		
3.5"+2.5" Drive Bays	1+0 or 0+1		
PCI Slots	4 Slots		
Air cooling	Top: 120mm x2 (Max.)		
	Rear: 80mm x1 or 90mm x1 (Max.)		
	Bottom: 120mm x2 (Max.)		
CPU cooler Height	140mm		
VGA Card lenght	280mm		

Performance M-ATX case for gaming



M1 PLUS

MB Support	MICRO ATX / ITX
Chassis Dimension	L350 x W212 x H310mm
I/O Panel	USB3.0 x2 + HD Audio
3.5"+2.5"" Drive Bays	2+2 or 1+3
PCI Slots	4 Slots
Air cooling	Front: 90mm x1 or 120mm x1 (Max.)
	Top: 120mm x2 or 140mm x2 (Max.)
	Rear: 120mm x1 (Max.)
	Bottom: 120mm x2 (Max.)
Liquid cooling	Top: 240mm
CPU cooler Height	175mm
VGA Card lenght	340mm

Panorama M-ATX case for gaming



N603

MB Support	MICRO ATX / ITX
Chassis Dimension	L440xW235xH405mm
I/O Panel	USB3.0 x2 + Type C x1 + HD Audio
3.5"+2.5"" Drive Bays	1+1
PCI Slots	5 Slots
Air cooling	Top: 120mm x3 (Max.) or 140mm x2 (Max.)
	Rear: 120mm x1 (Max.) or 140mm x1 (Max.)
	MB Cover: 120mm x 3 (Max.) PSU Cover: 120mm x2 (Max.)
Liquid cooling	Top: 360/280/240mm Rear: 120mm
	MB Cover: 360mm
CPU cooler Height	180mm
VGA Card lenght	430mm



H6M Screen

MB Support	MICRO ATX / ITX
Chassis Dimension	L410xW210xH430mm
I/O Panel	USB3.0 x2 + HD Audio
3.5"+2.5"" Drive Bays	2+1 or 1+2
PCI Slots	5 Slots
Air cooling	Top: 120mm x3 (Max.) or 140mm x2 (Max.)
	Rear: 120mm x1 (Max.)
	MB Cover: 120mm x 2 (Max.) PSU Cover: 120mm x3 (Max.)
Liquid cooling	Top: 360/280/240mm
	Rear: 120mm
CPU cooler Height	160mm
VGA Card lenght	405mm



H6M

MB Support	MICRO ATX / ITX
Chassis Dimension	L410xW210xH430mm
I/O Panel	USB3.0 x2 + HD Audio
3.5"+2.5"" Drive Bays	2+1 or 1+2
PCI Slots	5 Slots
Air cooling	Top: 120mm x3 (Max.) or 140mm x2 (Max.)
	Rear: 120mm x1 (Max.)
	MB Cover: 120mm x 2 (Max.) PSU Cover: 120mm x3 (Max.)
Liquid cooling	Top: 360/280/240mm
	Rear: 120mm
CPU cooler Height	160mm
VGA Card lenght	405mm

Panorama M-ATX case for gaming



OM01

MB Support	MICRO ATX / ITX
Chassis Dimension	L330xW218xH380mm
I/O Panel	USB3.0 x1 + USB2.0 x1 + HD Audio
3.5"+2.5"" Drive Bays	1+1
PCI Slots	4 Slots
Air cooling	Top: 120mm x2 (Max.) or 140mm x2 (Max.)
	Rear: 120mm x1 (Max.)
	PSU Cover: 120mm x2 (Max.)
Liquid cooling	Top: 240mm
	Rear: 120mm
CPU cooler Height	180mm
VGA Card lenght	310mm



277 Micro

MB Support	MICRO ATX / ITX
Chassis Dimension	L428 x W277 x H355mm
I/O Panel	USB3.0 x1 + USB2.0 x2 + HD Audio
3.5"+2.5"" Drive Bays	2+3
PCI Slots	5 Slots
Air cooling	Top: 120mm x3 or 140mm x2 (Max.)
	Rear: 120mm x1 (Max.)
	MB Cover: 120mm x 2 or 140mm x2 (Max.)
	Bottom: 120mm x3 or 140mm x2 (Max.)
Liquid cooling	Top: 360/280/240mm Rear: 120mm
	MB Cover: 280/240mm
CPU cooler Height	165mm
VGA Card lenght	385mm



285C1

MB Support	MICRO ATX / ITX
Chassis Dimension	L420xW285xH420mm
I/O Panel	USB3.0 x1 + USB2.0 x2 + HD Audio
3.5"+2.5"" Drive Bays	1+0 or 0+2
PCI Slots	5 Slots
Air cooling	Top: 120mm x3 (Max.) or 140mm x2 (Max.)
	Rear: 120mm x1 (Max.)
	MB Cover: 120mm x 2 (Max.) or 140mm x2 (Max.)
	Bottom: 120mm x3 (Max.)
Liquid cooling	Top: 360/280mm
	Rear: 120mm MB Cover: 280/240mm
CPU cooler Height	160mm
VGA Card lenght	403mm



285C2

MB Support	MICRO ATX / ITX
Chassis Dimension	L420xW285xH420mm
I/O Panel	USB3.0 x1 + USB2.0 x2 + HD Audio
3.5"+2.5"" Drive Bays	1+0 or 0+2
PCI Slots	5 Slots
Air cooling	Rear: 120mm x1 (Max.)
	MB Cover: 120mm x 2 (Max.) or 140mm x2 (Max.)
	Bottom: 120mm x3 (Max.)
Liquid cooling	Rear: 120mm
	MB Cover: 280/240mm
CPU cooler Height	160mm
VGA Card lenght	403mm

TURBO

High-end ATX PSU



	AI PC FM-1			TANK FM-1	
Wattage	2200W	2600W	3000W	1000W	1200W
Intel ATX compliant version	3.1			3.1	
Regulation design	APFC+DC-DC+LLC			APFC+DC-DC+LLC	
Input Voltage	230Vac			115V-230Vac	
PCI -E Guideline 5.0/5.1	5.1			5.1	
Efficiency at 20%/50%/100%	{89%/92%/90% 230V}			{90%/94%/92% 230V / 89%92%90% 115V}	
Cable output	Fully modular			Fully modular	
PFC Type	Active PFC			Active PFC	
Protection	OVP/OPP/SCP/UVP/OCp/OTP			OVP/OPP/SCP/UVP/OCp/OTP	
12V-2x6	YES	YES	YES	YES	YES
CPU Connector	2	2	2	2	2
PCI -E Connector	8	8	8	4	4
S-ATA Connector	15	15	15	8	8
Peripheral Connector	8	8	8	3	3



	TANK FM-3		METAVERSE PLUS FM-1	METAVERSE PLUS FM-2		CYCLONE FM-2		PRIME2 V2 FM-2		
Wattage	1000W	1200W	1000W	1000W	1200W	1000W	1200W	650W	750W	850W
Intel ATX compliant version	3.1		3.1	3.1		3.1		3.1		
Regulation design	APFC+DC-DC+LLC		APFC+DC-DC+LLC	APFC+DC-DC+LLC		APFC+DC-DC		APFC+DC-DC+LLC		
Input Voltage	115V-230Vac		115V-230Vac	115V-230Vac		115V-230Vac		115V-230Vac		
PCI -E Guideline 5.0/5.1	5.1		5.1	5.1		5.1		5.1		
Efficiency at 20%/50%/100%	{90%/94%/92% 230V / 89%92%90% 115V}		{89%/92%/90% 230V / 87%90%87% 115V}	{89%/92%/90% 230V / 87%90%87% 115V}		82%/85%/82%		{89%/92%/90% 230V / 87%90%87% 115V}		
Cable output	Fully modular		Fully modular	Fully modular		Fully modular		Fully modular		
PFC Type	Active PFC		Active PFC	Active PFC		Active PFC		Active PFC		
Protection	OVP/OPP/SCP/UVP/OCp/OTP		OVP/OPP/SCP/UVP/OCp/OTP	OVP/OPP/SCP/UVP/OCp/OTP		OVP/OPP/SCP/UVP/OCp/OTP		OVP/OPP/SCP/UVP/OCp/OTP		
12V-2x6	YES	YES	YES	YES	YES	YES	YES	YES	YES	YES
CPU Connector	2	2	2	2	2	2	2	2	2	2
PCI -E Connector	4	4	4	4	4	4	4	3	4	4
S-ATA Connector	8	8	8	8	8	8	8	8	8	8
Peripheral Connector	3	3	3	3	3	3	3	3	3	3



	TURBO V1 FM-1			STORM V1			STORM V1 RGB			STORM V1 RGB		
Wattage	650W	750W	850W	550W	650W	750W	550W	650W	750W	550W	650W	750W
Intel ATX compliant version	2,31			2,31			2,31			2,31		
Regulation design	APFC+DC-DC			Double forward + APFC			Double forward + APFC			Double forward + APFC		
Input Voltage	230Vac			230Vac			230Vac			230Vac		
PCI -E Guideline 5.0/5.1	5,1			NO			NO			NO		
Efficiency at 20%/50%/100%	82%/85%/82%			82%/85%/82%			82%/85%/82%			82%/85%/82%		
Cable output	Fully modular			Half modular			Half modular			Half modular		
PFC Type	Active PFC			Active PFC			Active PFC			Active PFC		
Protection	OVP/OPP/SCP/UVF/OCF			OVP/OPP/SCP/UVF			OVP/OPP/SCP/UVF			OVP/OPP/SCP/UVF		
12V-2x6	NO	NO	NO	NO	NO	NO	NO	NO	NO	NO	NO	NO
CPU Connector	2	2	2	1	2	2	1	2	2	1	2	2
PCI -E Connector	2	3	3	2	2	2	2	2	2	2	2	2
S-ATA Connector	6	6	6	4	6	6	4	6	6	4	6	6
Peripheral Connector	2	2	2	2	2	2	2	2	2	2	2	2



	SFX FM-2			SFX FM-3		HP PLUS			XP V1		
Wattage	650W	750W	850W	1000W	1200W	400W/450W/500W/550W	600W / 650W	700W / 750W	200W / 230W	250W	300W / 350W
Intel ATX compliant version	3.1			3.1		2.31			2.31		
Regulation design	APFC+DC-DC+LLC			APFC+DC-DC+LLC		Double forward + DC-DC			half-bridge		
Input Voltage	100-240Vac			100-240Vac		230Vac			230Vac / 5A Max		
PCI -E Guideline 5.0/5.1	5.1			5.1		NO			NO		
Efficiency at 20%/50%/100%	{89%/92%/90% 230V / 87%90%87% 115V}			{89%/92%/90% 230V / 87%90%87% 115V}		82%/85%/82%			63%		
Cable output	Fully modular			Fully modular		Non-modular			Non-modular		
PFC Type	Active PFC			Active PFC		NO			NO		
Protection	OVP/OPP/SCP/UVP/OCP/OTP			OVP/OPP/SCP/UVP/OCP/OTP		OVP/OPP/SCP/UVP			OVP/OPP/SCP/UVP		
12V-2x6	YES	YES	YES	YES	YES	NO	NO	NO	NO	NO	NO
CPU Connector	2	2	2	2	2	1	2	2	1	1	1
PCI -E Connector	2	3	3	3	3	2	2	3	NO	NO	1
S-ATA Connector	6	6	6	9	9	4	6	6	2	3	4
Peripheral Connector	2	2	2	2	2	2	2	2	2	2	2

Freeze

High Performance ARGB Liquid Cooler



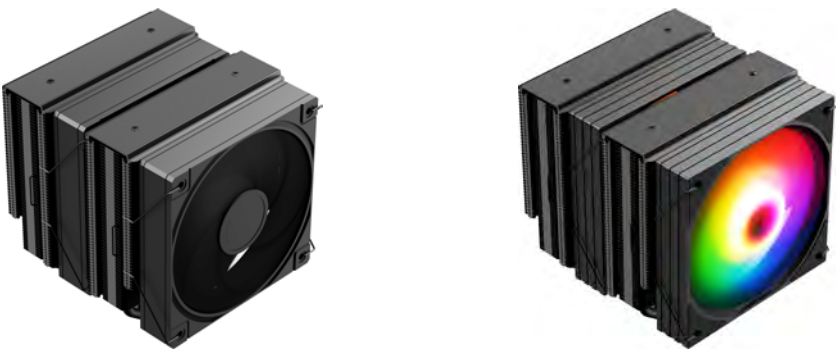
		Ice peak 240 V1	Ice 240 Third V1
TDP		280W	280W
Water Block and Pump	Dimension(WxDxH)	Ø75.0*54.0 mm	Ø72.8*55.3 mm
	Cold Plate Material	Copper	Copper
	Pump Speed	3000RPM±10%	2800RPM±10%
	Flow rate	≥1300 mL/min	≥1200 mL/min
	Rated Current	0.21A±20%	0.21A±10%
Radiator	Dimension(WxDxH)	277*120*27mm	277*120*27mm
	Material	Aluminum alloy	Aluminum alloy
Tubing	Length	φ12*380±10 mm（rubber tubing）	φ12*400±10 mm（rubber tubing）
Fan	Fan Quantity	12025 FAN ARGBx2	12025 FAN ARGBx2
	Fan Speed	2000±10%RPM	2000±10%RPM
	Air Flow	69.94CFM	71.5CFM
	Air Pressure	1.87mmH2O	2.45mmH2O
	Noise	28.8db（A）	31db（A）
CPU Socket	Intel	LGA1700/1200/115X/20xx	LGA1700/1200/115X/20xx
	AMD	AM5 / AM4	AM5 / AM4
Display	Panel active area	1.54inch	NO
	Resolution	240 x 240 pixel	NO
	Panel Type	27.72*27.72	NO



		Rubik 's Cube 240	Ice 240 Third	Ice 240 Second V1	Freeze 240	Ice vortex 240	Ice Dragon 240
TDP		280W	280W	280W	280W	280W	280W
Water Block and Pump	Dimension(WxDxH)	67.5mm*67.5mm*60.3mm	Ø72.8*55.3 mm	Ø72.8*55.3 mm	80*67*47.5mm	71*71*58.5mm	69*69*63mm
	Cold Plate Material	Copper	Copper	Copper	Copper	Copper	Copper
	Pump Speed	3000RPM±10%	2800RPM±10%	3000RPM±10%	3000RPM±10%	1200-2800RPM±10%	1200-2800RPM±10%
	Flow rate	≥1300 mL/min	≥1200 mL/min	\	\	≥1500 mL/min	≥1500 mL/min
	Rated Current	0.21A±20%	0.21A±10%	0.35A±20%	0.35A±20%	0.4A±20%	0.4A±20%
Radiator	Dimension(WxDxH)	277*120*27mm	277*120*27mm	277*120*27mm	277*120*27mm	277*120*27mm	277*120*27mm
	Material	Aluminum alloy	Aluminum alloy	Aluminum alloy	Aluminum alloy	Aluminum alloy	Aluminum alloy
Tubing	Length	φ12*380±10 mm(rubber tubing)	φ12*400±10 mm （rubber tubing）	330±10 mm(rubber tubing)	330±10 mm(rubber tubing)	400±10 mm(rubber tubing)	400±10 mm(rubber tubing)
Fan	Fan Quantity	12025 FAN ARGBx2	12025 FAN ARGBx2	24025 FAN ARGB	24025 FAN ARGB	12025 FAN ARGB	12025 FAN ARGB
	Fan Speed	2000±10%RPM Max	2000±10%RPM	1800±10%RPM Max	1800±10%RPM Max	800-2100±10%RPM Max	800-2100±10%RPM Max
	Air Flow	78CFM Max	71.5CFM	81.5CFM Max	81.5CFM Max	62.63CFM Max	62.63CFM Max
	Air Pressure	3.0mmH2O Max	2.45mmH2O	2.3mmH2O Max	2.3mmH2O Max	2.91mmH2O Max	2.91mmH2O Max
	Noise	32.0db□A□Max	31db （A）	33db(A) Max	33db(A) Max	30.7db(A) Max	30.7db(A) Max
CPU Socket	Intel	LGA1700/1200/115X/20xx	LGA1700/1200/115X/20xx	115X/17XX	115X/17XX	115X/17XX/1851	115X/17XX/1851
	AMD	AM5 / AM4	AM5 / AM4	AM5 / AM4	AM5 / AM4	AM5 / AM4	AM5 / AM4
Display	Panel active area	NO	NO	NO	NO	1.54inch	NO
	Resolution	NO	NO	NO	NO	NO	NO
	Panel Type	NO	NO	NO	NO	27.72*27.72	NO

L-158A-M6

High Performance ARGB air Cooler



		L-158A-M6	L-158A-M6
TDP		250W	250W
CPU Socket	Intel	LGA 115X / 1200 / 1700	LGA 115X / 1200 / 1700
	AMD	AM5 / AM4	AM5 / AM4
Heatsink	Coldplate structure	HDT (Direct touch)	HDT (Direct touch)
	Heat pipe diameter	φ6mm	φ6mm
	Heat pipe number	6PCS	6PCS
	Heat pipe finish	Nickel Plated	Nickel Plated
	Dimension (WxDxH)	125*110*153mm	125*110*153mm
	Bearing Type	Hydro Bearing	Hydro Bearing
Fan	Fan Speed	800-2100RPM	800-1800RPM
	Air Flow	57.1 CFM	58 CFM
	Air Pressure	2.41 mmH2O	2.15 mmH2O
	Noise	29.9 dB(A)	36.9 dB(A)
	Connector & Control	4Pin PWM	4Pin PWM
	Sync with MB	NO	YES



		L-152A-M4	L-140-H4	L-125D-H4	L-125D-M4	L-125-M4 A	L-152-M4 B
TDP		210W	200W	220W	220W	220W	220W
CPU Socket	Intel	LGA 115X / 1200 / 1700	LGA 115X / 1200 / 1700	LGA 115X / 1200 / 1700	LGA 115X / 1200 / 1700	LGA 115X / 1200 / 1700 / 18xx	LGA 115X / 1200 / 1700 / 18xx
	AMD	AM5 / AM4	AM5 / AM4	AM5 / AM4	AM5 / AM4	AM5 / AM4	AM5 / AM4
Heatsink	Coldplate structure	HDT (Direct touch)	HDT (Direct touch)	HDT (Direct touch)	HDT (Direct touch)	HDT (Direct touch)	HDT (Direct touch)
	Heat pipe diameter	φ6mm	φ6mm	φ6mm	φ6mm	φ6mm	φ6mm
	Heat pipe number	4PCS	4PCS	4PCS	4PCS	4PCS	4PCS
	Heat pipe finish	Nickel Plated	Nickel Plated	Nickel Plated	Nickel Plated	Nickel Plated	Nickel Plated
	Dimension (WxDxH)	120*110*148mm	120*45*148mm	120*48*148mm	120*48*148mm	120*45*153mm	120*45*153mm
	Bearing Type	Hydro Bearing	Hydro Bearing	Hydro Bearing	Hydro Bearing	Hydro Bearing	Hydro Bearing
Fan	Fan Speed	800-1800RPM	800-1800RPM	800-1800RPM	500-2000RPM	500-2000RPM	500-2000RPM
	Air Flow	58 CFM	62.93 CFM	62.93 CFM	90.02 CFM	90.02 CFM	90.02 CFM
	Air Pressure	2.15 mmH2O	1.75 mmH2O	1.75 mmH2O	2.9 mmH2O	2.9 mmH2O	2.9 mmH2O
	Noise	36.9 dB(A)	23.4 dB(A)	23.4 dB(A)	36.3 dB(A)	36.3 dB(A)	36.3 dB(A)
	Connector & Control	4Pin PWM	4Pin PWM	4Pin PWM	4Pin PWM	4Pin PWM	4Pin PWM
	Sync with MB	YES	YES	YES	YES	YES	YES

FNW010

High Performance ARGB fan



	FNW010	FNW019
Connector & Control	Fan: PWM-4Pin Lights: 5V-3Pin ARGB	Fan: PWM-4Pin Lights: 5V-3Pin ARGB
Dimension(WxDxH)	120x120x25mm	120*120*25mm
Fan Speed	1800RPM ± 10%	1800RPM±10%
Air Flow(Max.)	53.69 CFM	47.2CFM
Air Pressure(Max.)	1.89 mmH2O	1.6mmH2O
Noise(Max.)	23.8 dBA	30 dBA
Bearing Types	Hydraulic Bearing	HDB Bearing
Cable Length	580mm(Fan)/ 550mm(ARGB)	420mm(Fan)/ 530mm(ARGB)



	FW023	FW024	FNW015	FN001
Connector & Control	Fan: SATA+SM-4PIN Lights: 5V-3Pin ARGB	Fan: PWM-4Pin Lights: 5V-3Pin ARGB	Fan: PWM-4Pin Lights: 5V-3Pin ARGB	Fan: SATA+SM-4PIN Lights: 5V-3Pin ARGB
Dimension(WxDxH)	120*120*25mm	120*120*25mm	120*120*25mm	120x120x25mm
Fan Speed	800-1100RPM±10%	1800RPM±10%	1800RPM±10%	1100RPM ± 10%
Air Flow(Max.)	31.91 CFM	47.2CFM	47.2CFM	41.5 CFM
Air Pressure(Max.)	0.82mmH2O	1.6mmH2O	1.6mmH2O	0.68 mmH2O
Noise(Max.)	18.08dBA	30 dBA	30 dBA	22.4dBA
Bearing Types	Hydraulic Bearing	HDB Bearing	HDB Bearing	Hydraulic Bearing
Cable Length	420mm(Fan)/ 530mm(ARGB)	420mm(Fan)/ 530mm(ARGB)	420mm(Fan)/ 530mm(ARGB)	580mm(Fan)/ 550mm(ARGB)



	FN003	FN017	FN019	FN041	FN042
Connector & Control	Fan: SATA+SM-4PIN Lights: 5V-3Pin ARGB	Fan: 2510-4Pin PWM Lights: 5V-3Pin ARGB	Fan: 2510-4Pin PWM Lights: 5V-3Pin ARGB	Fan: PWM-4Pin Lights: 5V-3Pin ARGB	Fan: SATA+SM-4PIN Lights: 5V-3Pin ARGB
Dimension(WxDxH)	120x120x25mm	120x120x25mm	120x120x25mm	120*120*25mm	120x120x25mm
Fan Speed	1000RPM±10%	900-1800RPM±10%	900-1800RPM±10%	700-1500RPM±10%	1000RPM ± 10%
Air Flow(Max.)	35.61CFM	47.21CFM	81.73CFM	60.36CFM	43.06 CFM
Air Pressure(Max.)	0.48mmH2O	1.41mmH2O	2.45mmH2O	1.15mmH2O	0.67 mmH2O
Noise(Max.)	20.32dBA	22.6dBA	31.6dBA	26.8dBA	20.2dBA
Bearing Types	Hydraulic Bearing	Hydraulic Bearing	Hydraulic Bearing	Hydraulic Bearing	Hydraulic Bearing
Cable Length	480mm(Fan)/ 435mm(ARGB)	470mm(Fan)/ 425mm(ARGB)	480mm(Fan)/ 480mm(ARGB)	420mm(Fan)/ 530mm(ARGB)	550mm(Fan)/ 550mm(ARGB)